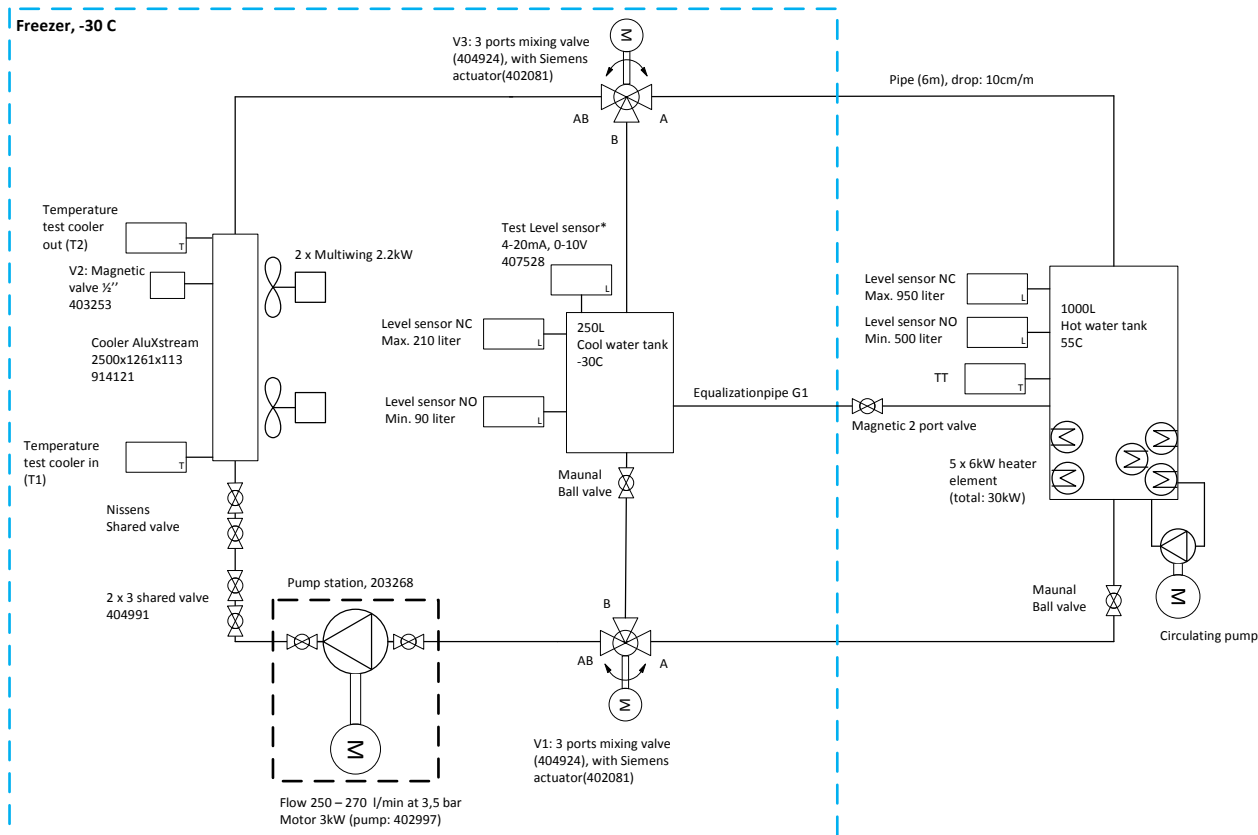


SYSTEM 2
Thermal Stress Test Equipment, LORC
(double line with drain dack system)

Water/Glycol 50% in test water circuit.
 Mixed coolant delivered from supplier



Signaler:

Udgange:

- 2 x 2kW motor
- 5 x 6 kW varmelegmer
- 3 kW pumpe
- 2 x 3-port valve (24V)
- 2 x magnetic valve (udlig. og luft) (24V)
- 2 x 230 V til varmhætte
- 2 x 24V (stemheater)
- 1 x mindre circuit

Indgange:

- 2 x temp sensor
- 2 x level sensor (norm. closed NC)
- 2 x level sensor (norm. open NO)
- 2(4) x positions kontakt

Logges af FORCE:

- 2 x temp sensor (cooler)
- 1 x level sensor (test)
- 1 x temp (pump)
- 1 x tryk (pump)

Total effekt forbrug (24V)

- Stemheater: 2 x 30W = 60W
- 3 port valve: 2 x 13W = 26W
- 2 port valve: 2 x 7W = 14
- Total: 100 W

Husk kontrol:

- Studse ved T2 og T1, i.f.t -30C

NOTE:

- Husk ref. væske ved -30C med mekanisk og digital level gauge.

